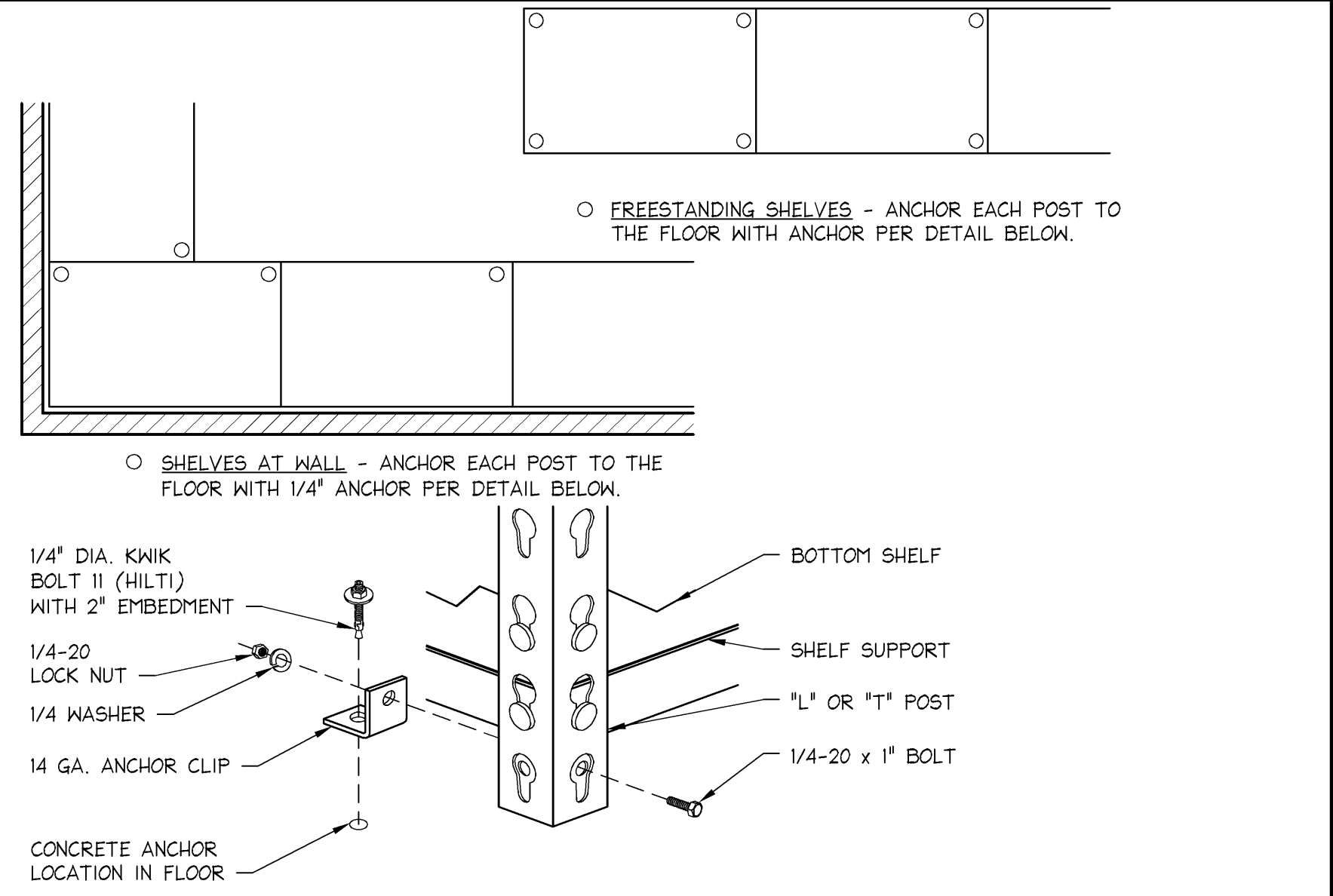
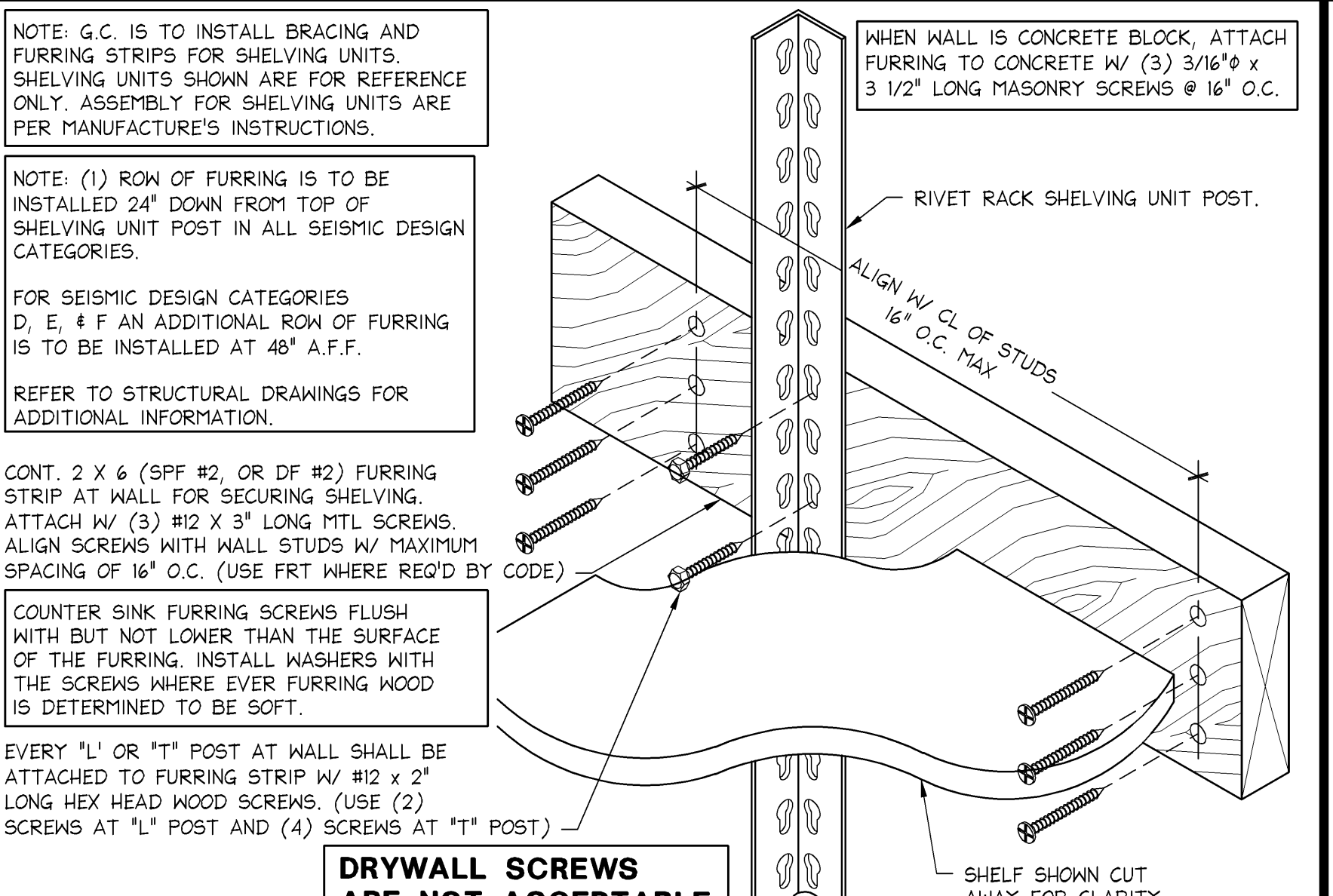


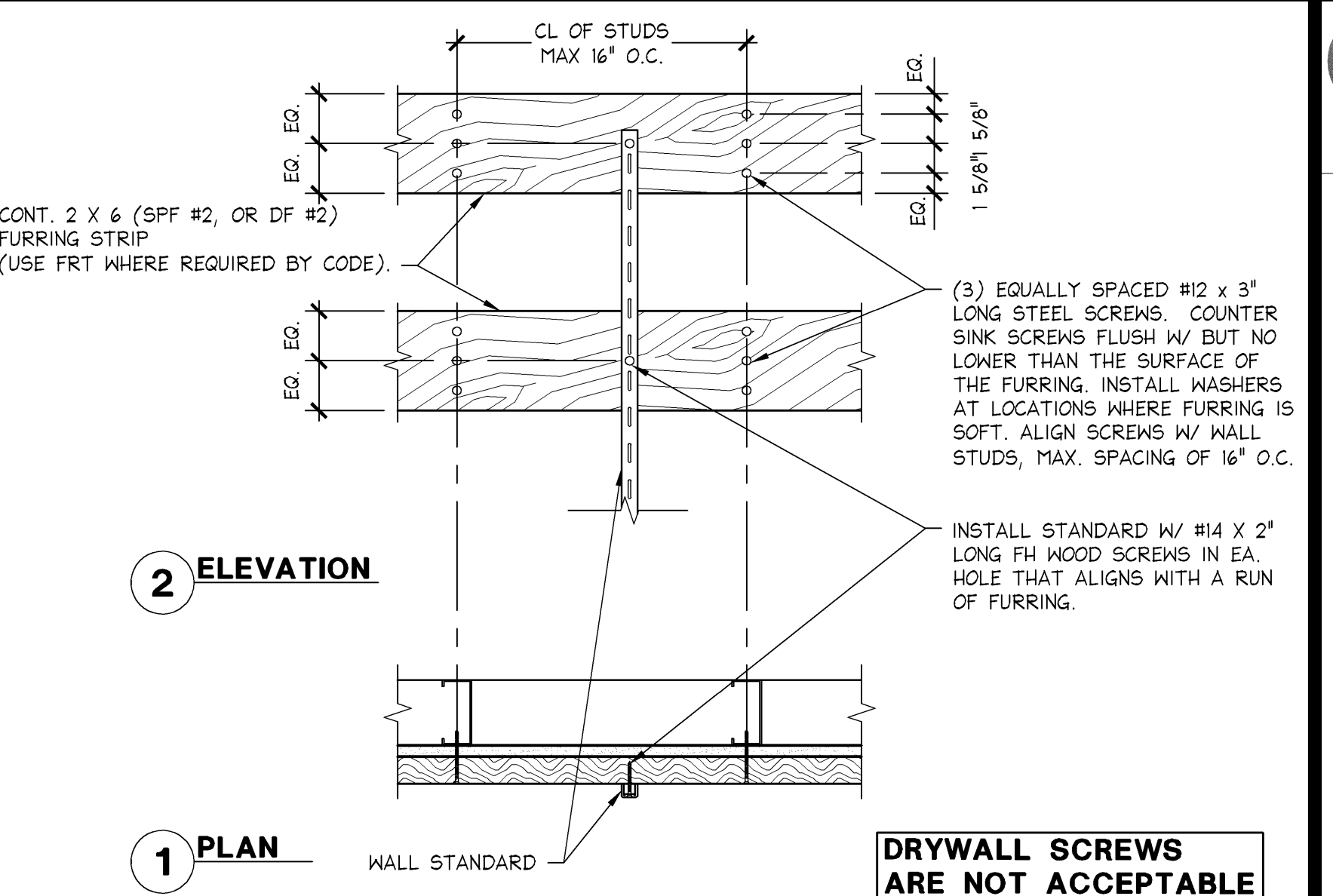
MUSIC WALL CABINET MOUNTING DETAIL
1" = 1'-0"
05D-A1401-S01-DETL
S
09.09.13



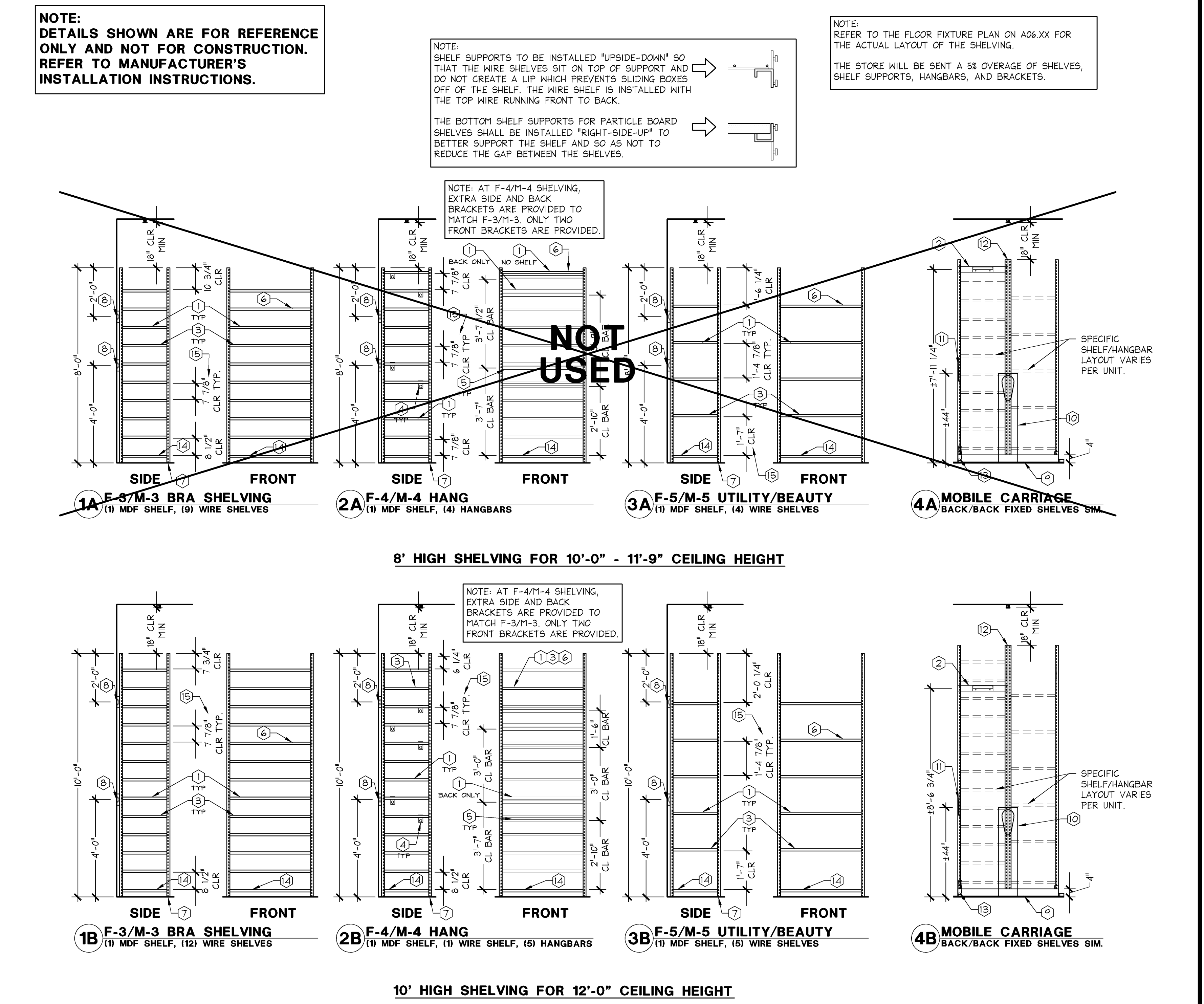
RIVET RACK - ANCHOR DETAIL
3" = 1'-0"
05D-A1401-M00-DETL
M
09.09.13



RIVET RACK - FURRING ATTACHMENT
3" = 1'-0"
05D-A1401-H00-DETL
H
09.09.13

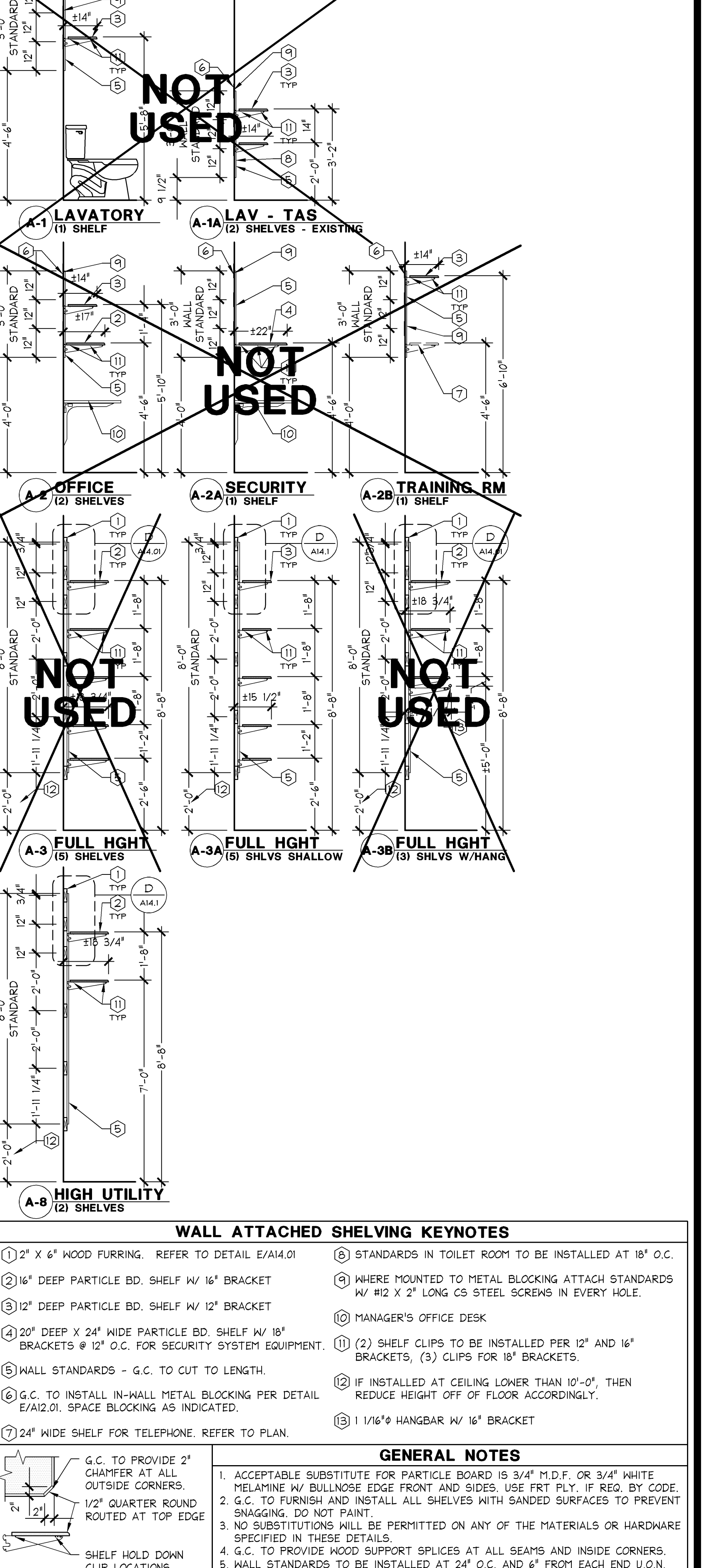


WALL MOUNTED SHELVING FURRING ATTACHMENT DETAIL
1 1/2" = 1'-0"
05D-A1401-D00-DETL
D
09.09.13



FIXED AND MOBILE SHELVING KEYNOTES		FIXED AND MOBILE GENERAL NOTES	
1. DOUBLE RIVET SHELF SUPPORT. CLEARANCES SHOWN ARE APPROXIMATE DIMENSIONS TAKEN FROM T.O. SUPPORT TO B.O. SUPPORT. SEE BOX NOTE ABOVE FOR SUPPORT ORIENTATION.	3. MOBILE UNIT CARRIAGE ON FLAT TRACK SYSTEM W/ ANTI-TIP.	1. THESE DETAILS ARE FOR GENERAL INFORMATION ONLY. G.C. TO INSTALL SHELVING UNITS PER MANUFACTURER'S GUIDELINES.	
2. LADDER HOOK TO BE INSTALLED AT THE END OF EVERY OTHER MOBILE UNIT OR RUN OF FIXED SHELVING. HEIGHT MAY ADJUST 2 NOTCHES (±3") TO AVOID SHELF BRACKETS.	10. MOBILE UNIT CRANK SYSTEM WHERE OCCURS. REFER TO CONSTRUCTION FLOOR PLAN.	2. ALL FRONT SHELVING ELEVATIONS ARE SHOWN AS FIXED UNITS. SHELF/HANGBAR LAYOUT IS IDENTICAL FOR MOBILE UNITS, PLUS THE CARRIAGE.	
3. WIRE SHELF (2"x4" GRID). INSTALL WITH TOP WIRE RUNNING FRONT TO BACK. SEE BOX NOTE ABOVE FOR ORIENTATION.	11. MOBILE UNIT PULL HANDLE. INSTALL ONE PER EACH MOBILE RUN WITH OR WITHOUT CRANK SYSTEM.	3. THE TOPS OF ALL SHELVING UNITS SHALL BE MIN. 18" CLEAR OF BOTTOM OF SPRINKLER HEADS. NOTE: THIS DOES NOT NECESSARILY MEAN FROM BOTTOM OF CEILING.	
4. HANGBAR SUPPORT.	12. BACK-TO-BACK SHELVING UNITS (MOBILE OR FIXED) ARE TO BE FASTENED TO EACH OTHER PER MANUFACTURER INSTRUCTIONS.	4. ALL SHELF FRAMES, MOUNTING HARDWARE, BRACKETS, HANGRODS, ACCESSORIES, ETC. ARE SUPPLIED BY LSD&C AND INSTALLED BY G.C.	
5. 1 1/4" DIAMETER HANGBAR. STAGGER PLACEMENT PER EXAMPLE SHOWN IN SIDE ELEVATION.	13. MOBILE UNIT FOOTBRACE ASSEMBLY TO BE INSTALLED (1) PER MOBILE RUN WITHOUT CRANK SYSTEM ONLY.	5. G.C. TO SURVEY AND EVALUATE CONDITION AND LEVEL OF STOCKROOM FLOOR FOR TRACK ATTACHMENT. CONSULT WITH MFG. FOR FLOOR TOLERANCE.	
6. "DO NOT CLIMB ON SHELVING" DECAL PROVIDED BY VENDOR. PLACE ONE AT THE FACE OF EACH UNIT ON A SHELF SUPPORT AT ±80" A.F.F. U.O.N.	14. PARTICLE BOARD BOTTOM SHELF AT ALL UNITS. SEE BOX NOTE ABOVE FOR SUPPORT ORIENTATION.	6. G.C. TO PLAN SEQUENCE OF EVENTS AND INSTALLATION PER MANUFACTURER'S INSTRUCTIONS TO ENSURE A FUNCTIONAL SYSTEM.	
7. FLOOR ANCHORS - REFER TO DETAIL MVA14.01 FOR QTY. AND INSTALLATION.	15. CLEAR SHELVING DIMENSIONS ARE TAKEN FROM TOP OF SHELF SUPPORT TO BOTTOM OF NEXT SHELF SUPPORT. THIS DIMENSION IS REQUIRED TO REMAIN CLEAR IN ORDER TO FIT THE NECESSARY BOX SIZE. NOTE: THE WIRE SHELVES WHICH SIT ATOP THE SUPPORTS INTRUDE UPON THIS CLEARANCE, HOWEVER THIS HAS BEEN ACCOUNTED FOR.		
8. ATTACH SHELVING UNIT TO WOOD FURRING AT WALL PER DETAIL H/A14.01. G.C. TO PAINT FURRING STRIPS TO MATCH WALL FINISH.			

FIXED AND MOBILE SHELVING DETAILS
3/8" = 1'-0"
05D-A1401-E00-DETL
E
02.22.14



WALL MOUNTED SHELVING DETAIL
3/8" = 1'-0"
05D-A1401-A00-DETL
A
09.09.13

Stantec
Stantec Architecture Inc.
1383 N. McDowell Blvd., Suite 250
Petaluma, CA U.S.A. 94954
Tel. 707.765.1660 Fax. 707.765.9908
www.stantec.com

Limited Brands
LIMITED STORE PLANNING, INC.
d/b/a STORE DESIGN & CONSTRUCTION
Three Limited Parkway • Columbus, Ohio 43230
Telephone: 614.415.7000 • Fax: 614.415.7349

PROJECT INFORMATION:
010500485
VICTORIA'S SECRET
CAROLINA PLACE
11025 CAROLINA PLACE PKWY
SPACE B-11
PINEVILLE, NC 28134
SCOPE: DESIGN TYPE: LS&C PROJECT #:
REFRESH: PACKAGE: R131SG/142Fg
NMA/ANGELS GENERATION: 2007684009
A/E PROJECT #:

REVISIONS:
REQUIRED BY: DATE:
ELITE CONSTRUCTION GROUP
LAKE JACKSON, TX
PHONE: 979-283-0712
NOTE: THESE PRINTS HAVE BEEN REDUCED BY 50 PERCENT SCALE
WILL BE 50 PERCENT OF WHAT IS NOTED ON PLANS
DATE ISSUED: 9/26/14
DESIGNED BY: KW
DRAWN BY: MS
CHECKED BY: DB

DRAWING NUMBER:
A14.1